

Features

- Stainless steel for light sewage water
- Dual mechanical seal
- Thermal protection
- Float switch
- Motor protection IP68
- Insulation class F
- Maximum immersion depth 5m

Performance

- Capacity up to 30 m³/h
- Manometric Head up to 14 m
- Max. diameter of incoming particles 50 mm

Applications

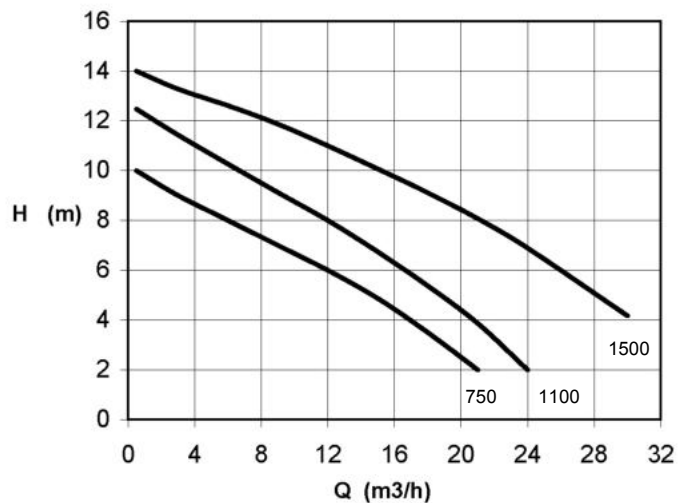
- Small tanks
- Garage
- Basement
- Domestic use for sewage and waste water
- Industrial use
- Sea water pumping

Materials

- Motor casing made of stainl. steel AISI 304
- Shaft made of stainless steel AISI 304
- Impeller made of stainless steel AISI 304
- Pump casing made of stainl. steel AISI 304

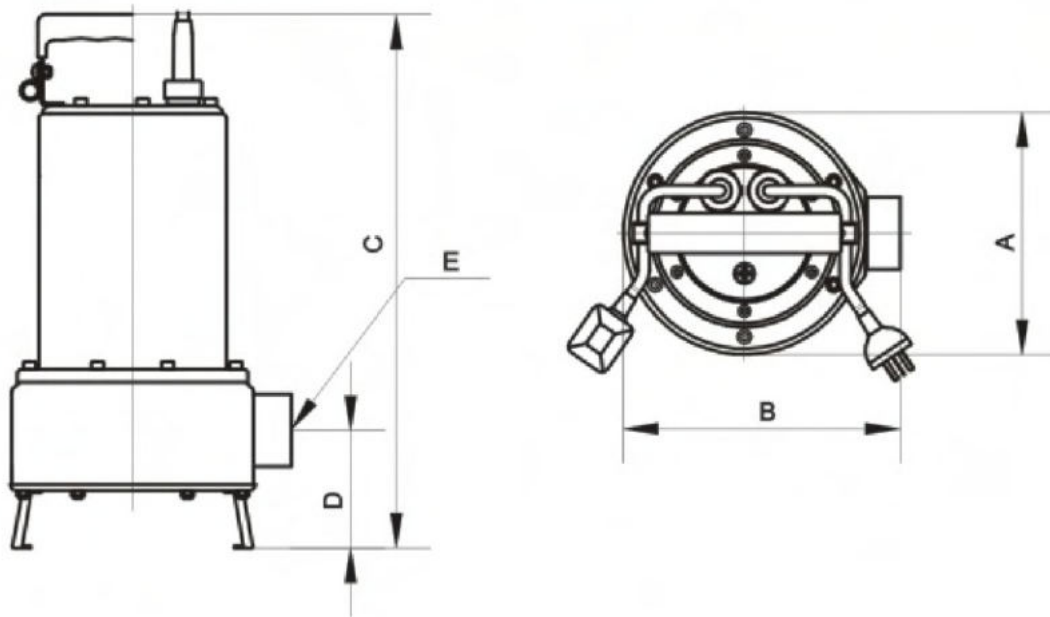


ARGO XX



TYPE	VOLT	MOTOR KW	PARTICLES MAX DIAMETER	Capacity (Q)													
				m ³ /h	0,5	3	6	9	12	15	18	21	24	30			
Argo XX 750	220V	0,75	38mm	l/min	8,3	50	100	150	200	250	300	350	400	450			
				H (m)	10	9	8	7	6	4,9	3,5	2					
					12,5	11,5	10,3	9,1	8	6,8	5,4	3,9	2				
Argo XX 1100	220V	1,1	38mm	H (m)	14	13,3	12,6	11,9	11	10	9	8	7	4,2			
Argo XX 1500	220V	1,5	50mm	H (m)													

Dimensions



TYPE	A (mm)	B (mm)	C (mm)	D (mm)	E Discharge	Weight
Argo XX 750	170	195	395	76	1''1/2	15kg
Argo XX 1100	170	195	395	76	1''1/2	16kg
Argo XX 1500	190	201	465	100	2''	19kg