

Features

- Stainless steel for light sewage water
- Grinding device to avoid clogging
- Dual mechanical seal
- Thermal protection
- Float switch only for single phase
- Motor protection IP68
- Insulation class F
- Maximum immersion depth 5m

Performance

- Capacity up to 27 m³/h
- Manometric Head up to 12,5 m

Applications

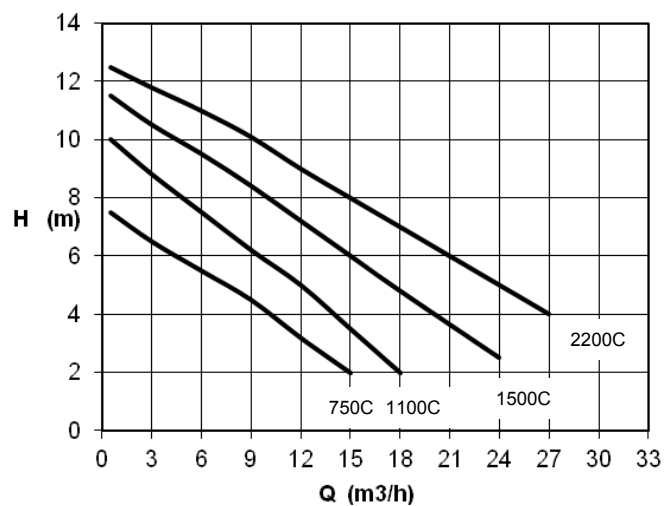
- Pumping of waste water
- Domestic use of sewage water
- Restaurants
- Hotels

Materials

- Motor casing made of stainl. steel AISI 304
- Shaft made of stainless steel AISI 304
- Impeller made of stainless steel AISI 304
- Pump casing made of stainl. steel AISI 304
- Cutters made of cast iron
- Grinding ring made of cast iron

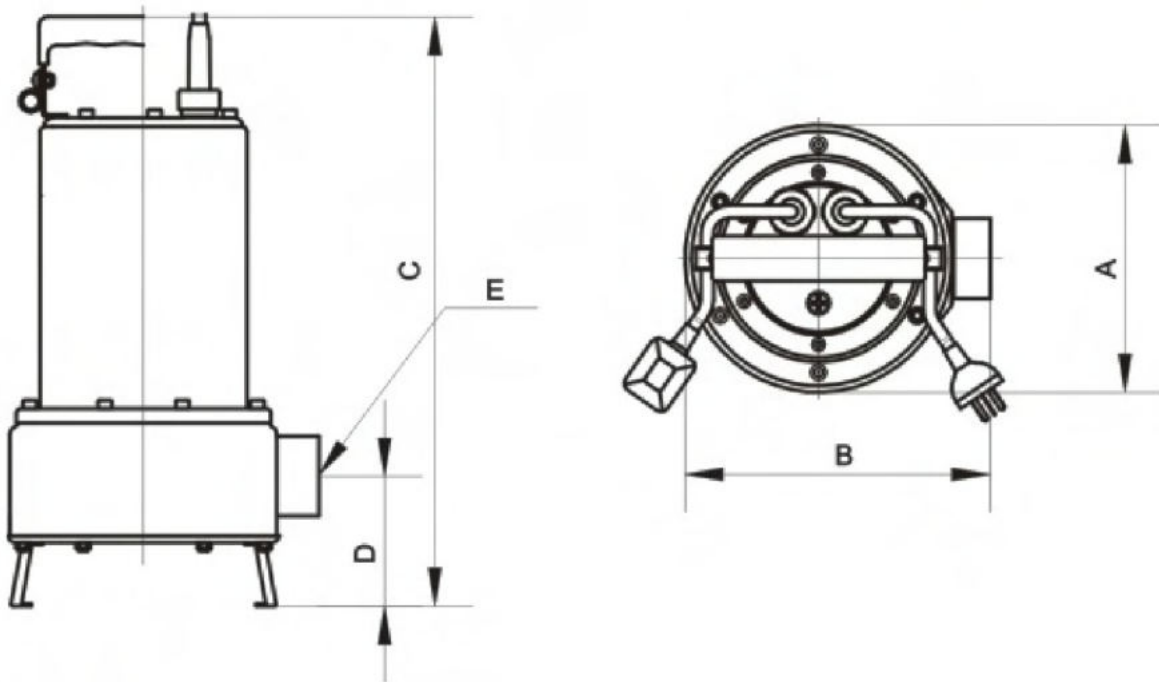


ARGO X C



TYPE	VOLT	MOTOR KW	PARTICLES MAX DIAMETER	m ³ /h	0,5	3	6	9	12	15	18	21	24	27	
					l/min	8,3	50	100	150	200	250	300	350	400	450
Argo X 750C	220V	0,75	Cutters	H (m)	7,5	6,5	5,5	4,5	3,2	2					
Argo X 1100C	220V	1,1	Cutters		10	8,8	7,5	6,2	5	3,5	2				
Argo X 1500C	220V	1,5	Cutters		11,5	10,5	9,5	8,4	7,2	6	4,8	2,5	11,5		
Argo X 2200C	400V	2,2	Cutters		12,5	11,8	11	10,1	9	8	7	6	5	4	

Dimensions



TYPE	A (mm)	B (mm)	C (mm)	D (mm)	E Discharge	Weight
Argo X 750C	170	195	395	76	1''1/2	16kg
Argo X 1100C	170	195	395	76	1''1/2	17kg
Argo X 1500C	190	201	465	100	2''	20kg
Argo X 2200C	190	225	470	110	3''	23kg